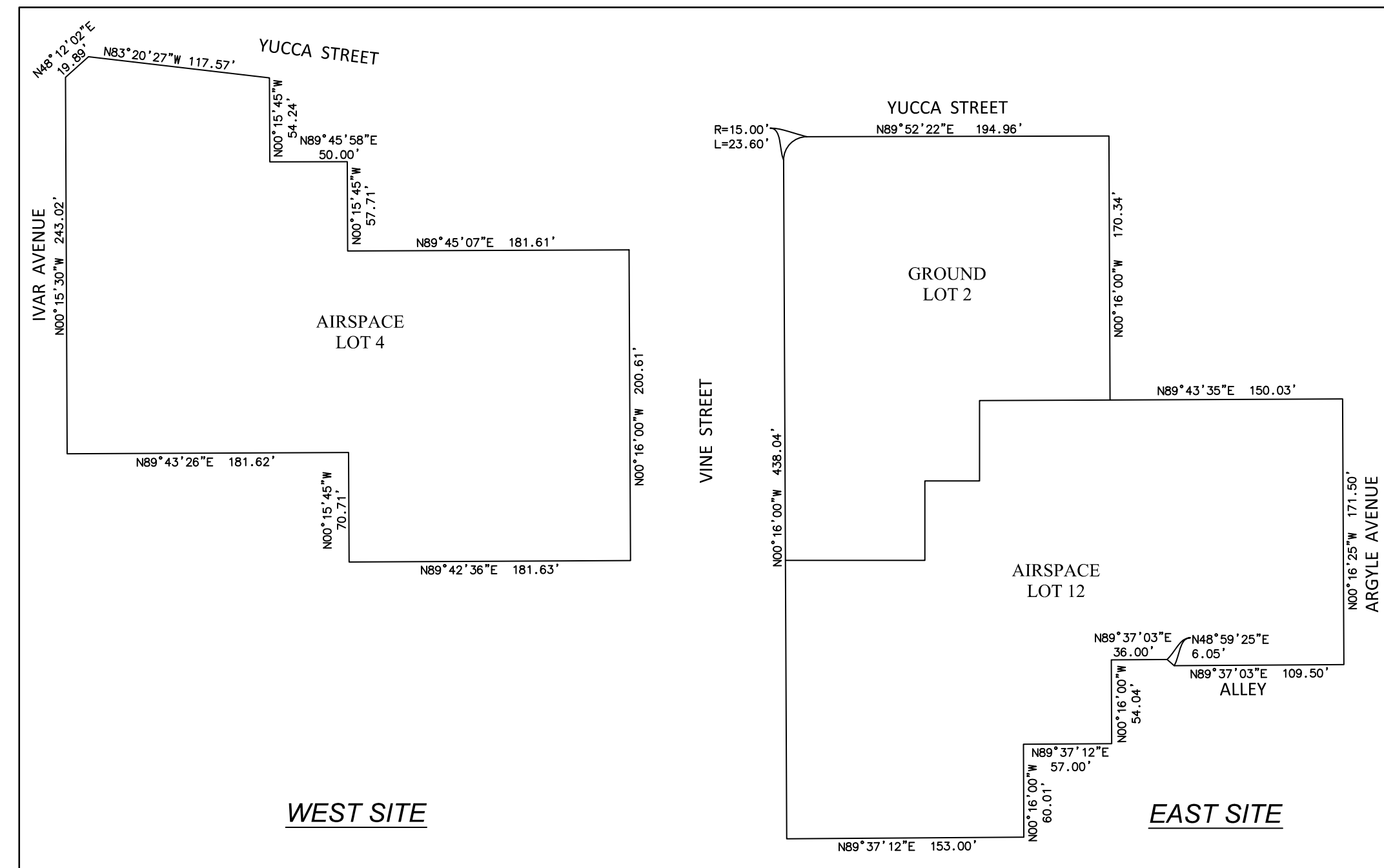


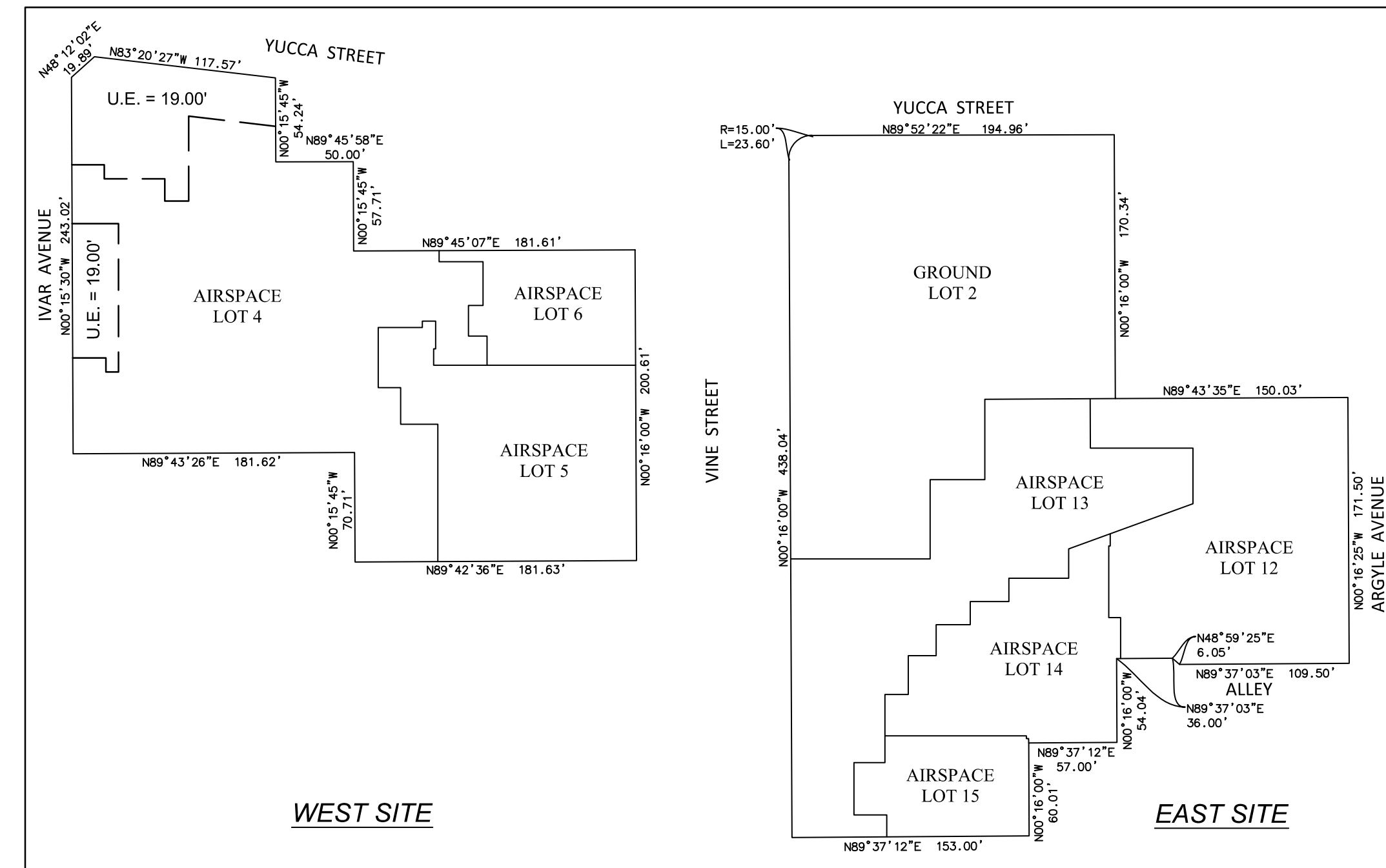
VESTING TENTATIVE TRACT MAP NO. 82152

AIRSPACE LOT CONFIGURATIONS



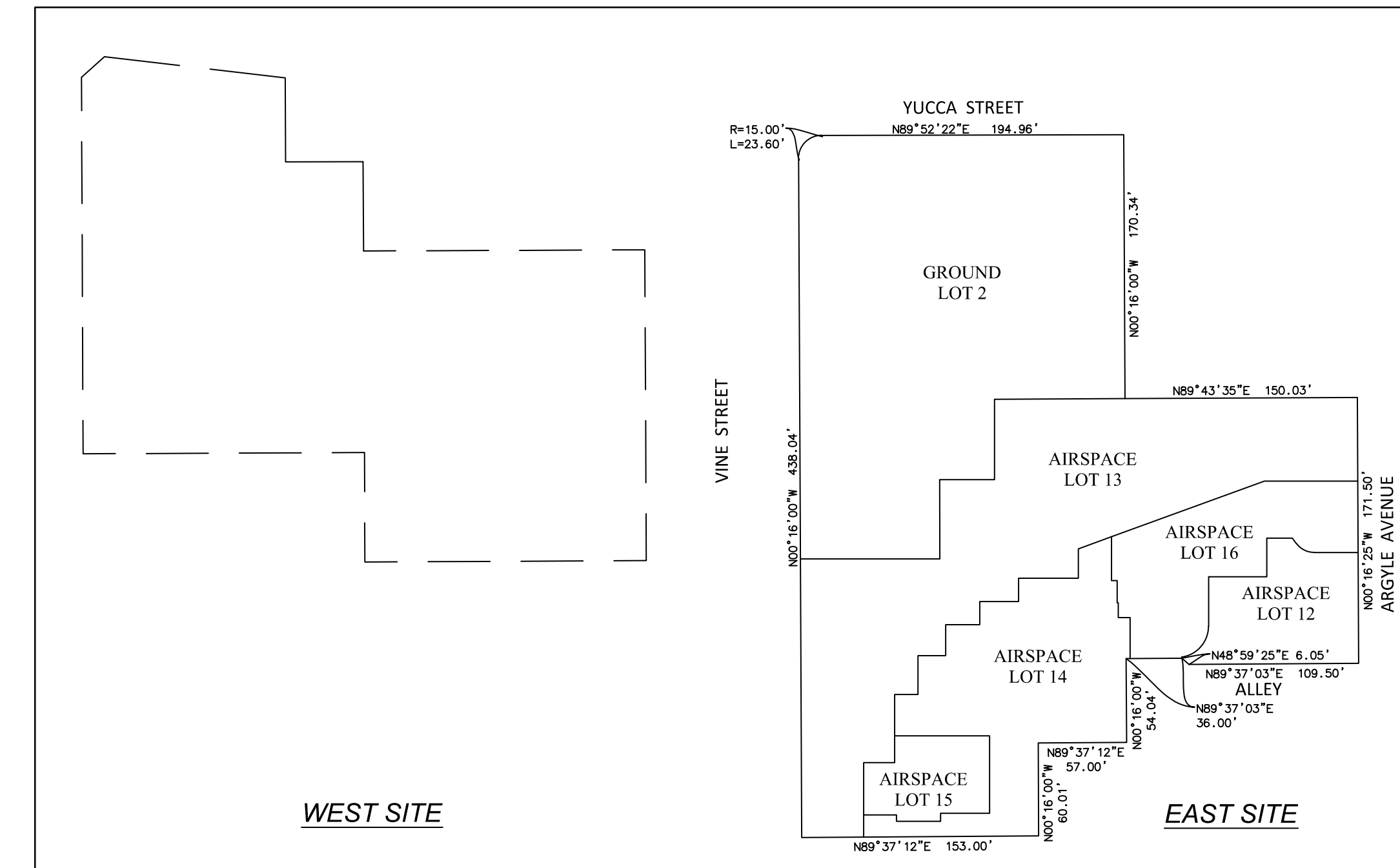
LEVELS B5 - B1
L.E. = -100.00', U.E. = 4.00'

LEVELS B7 - B1
L.E. = -100.00', U.E. = 5.00'

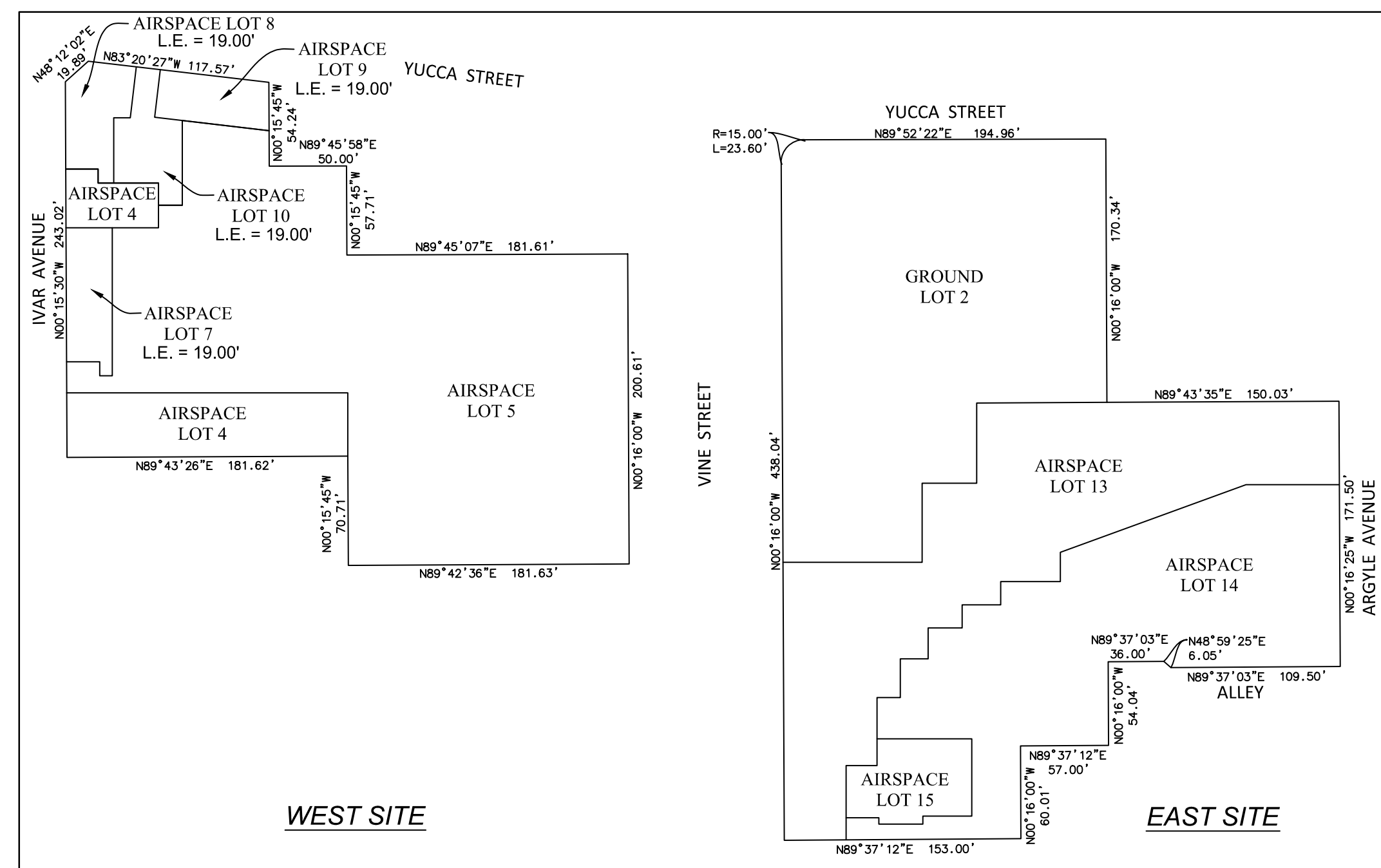


LEVEL 1
L.E. = 4.00', U.E. = 24.00'
UNLESS NOTED OTHERWISE

LEVEL 1
L.E. = 5.00', U.E. = 14.00'

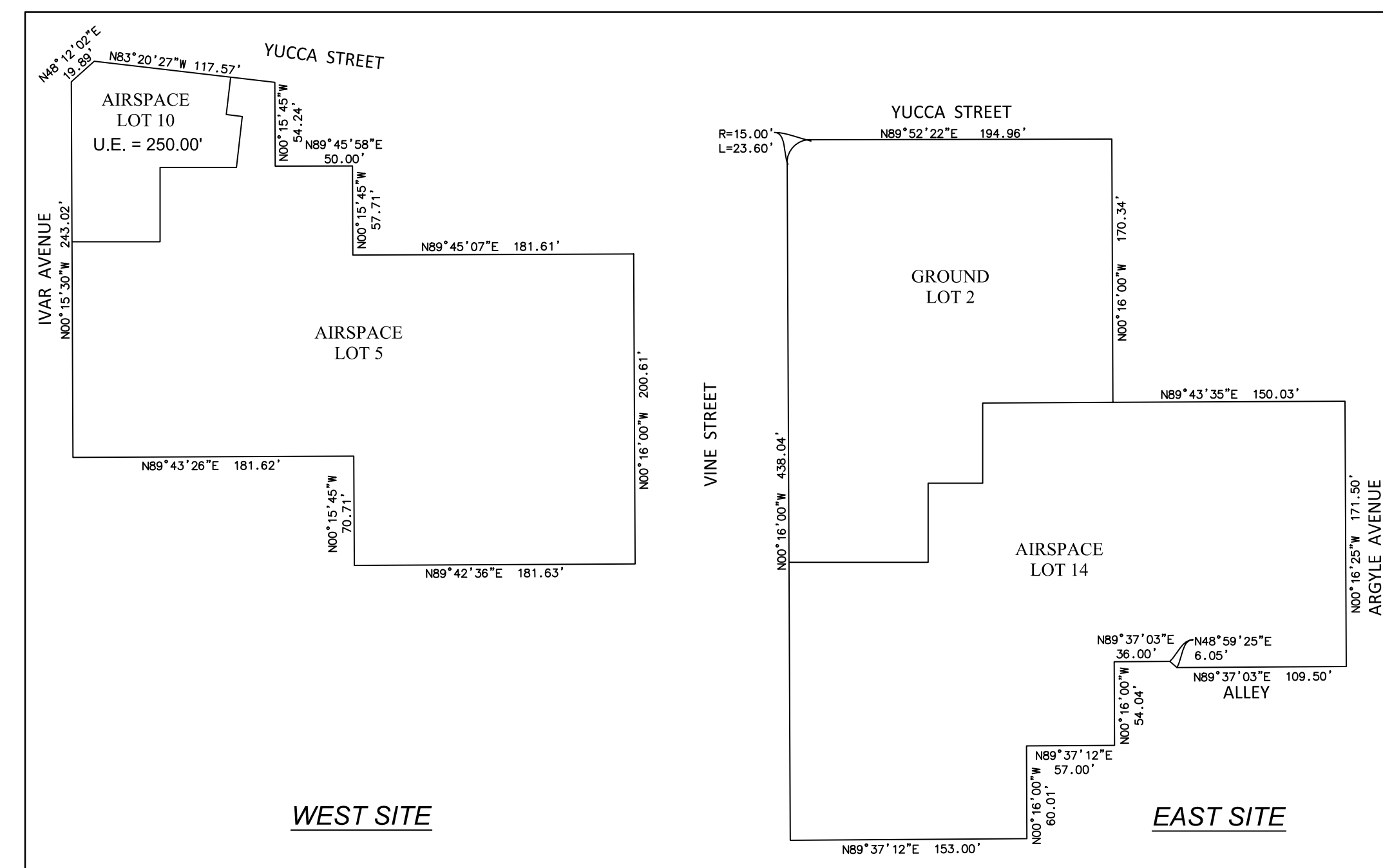


LEVEL 1 (ARGYLE)
L.E. = 14.00', U.E. = 30.00'



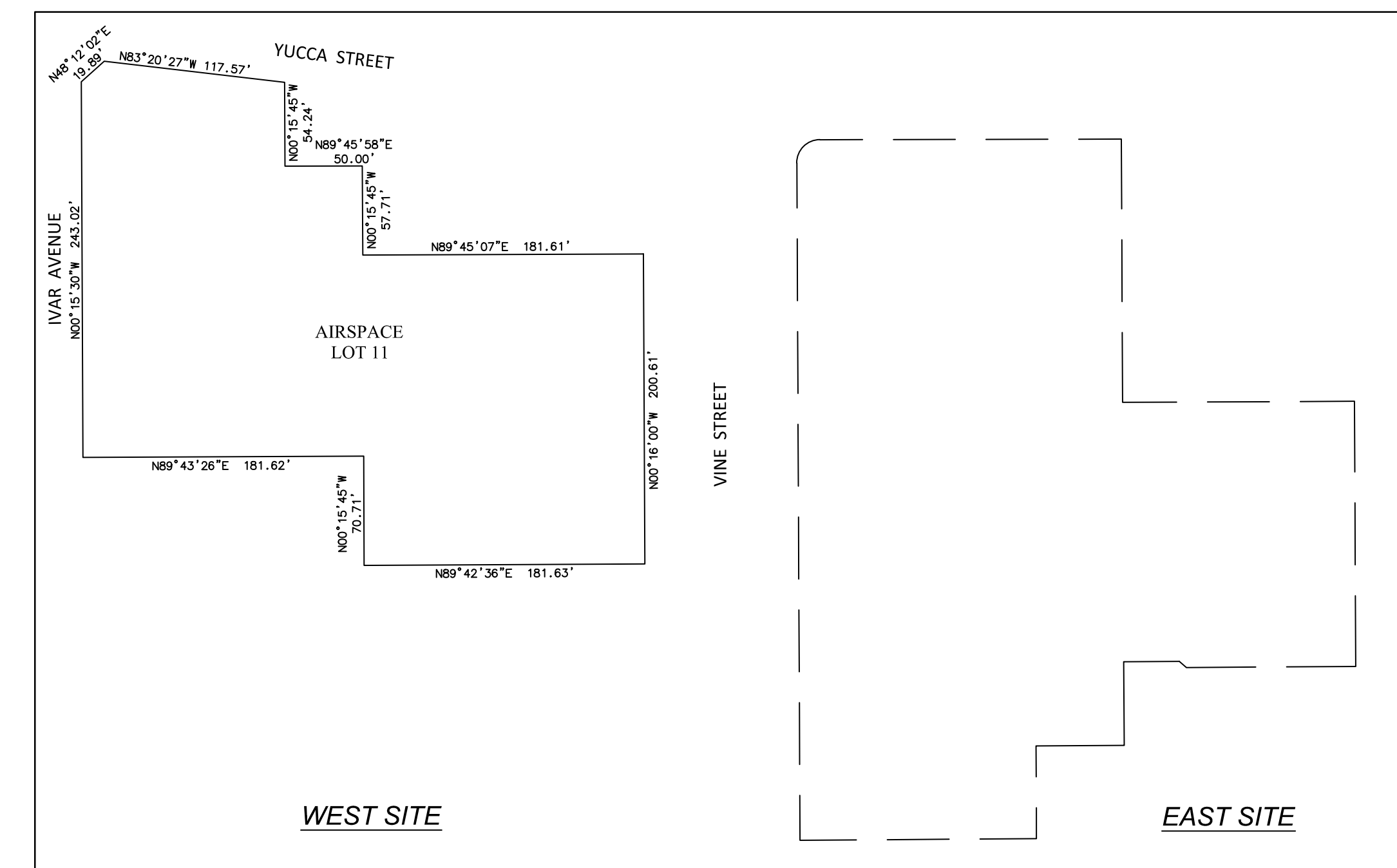
LEVEL 01 (MEZZ)
L.E. = 24.00', U.E. = 45.00'
UNLESS NOTED OTHERWISE

LEVEL 01 (MEZZ)
L.E. = 30.00', U.E. = 47.00'



LEVELS 02 - 47
L.E. = 45.00', U.E. = 528.75'
UNLESS NOTED OTHERWISE

LEVELS 02 - ROOF
L.E. = 47.00', U.E. = 400.00'



LEVELS 48 - ROOF
L.E. = 528.75', U.E. = 650.00'

NOTE:
GROUND LOTS SHOWN FOR LOCATION/REFERENCE ONLY.
NO AIRSPACE LOTS WITHIN GROUND LOT 2.

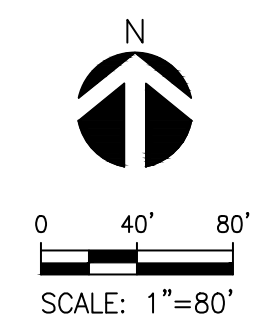
ABBREVIATION LEGEND
L.E. = LOWER ELEVATION
U.E. = UPPER ELEVATION

REVISIONS	
DATE	ISSUED FOR

DATE: 07/23/2020
PROJECT NUMBER: 1700060
DRAWN BY: DB
CHECKED BY: CJ
SCALE: AS SPECIFIED

PROJECT ADDRESS:
HOLLYWOOD CENTER
(ALT 08)

SHEET NUMBER

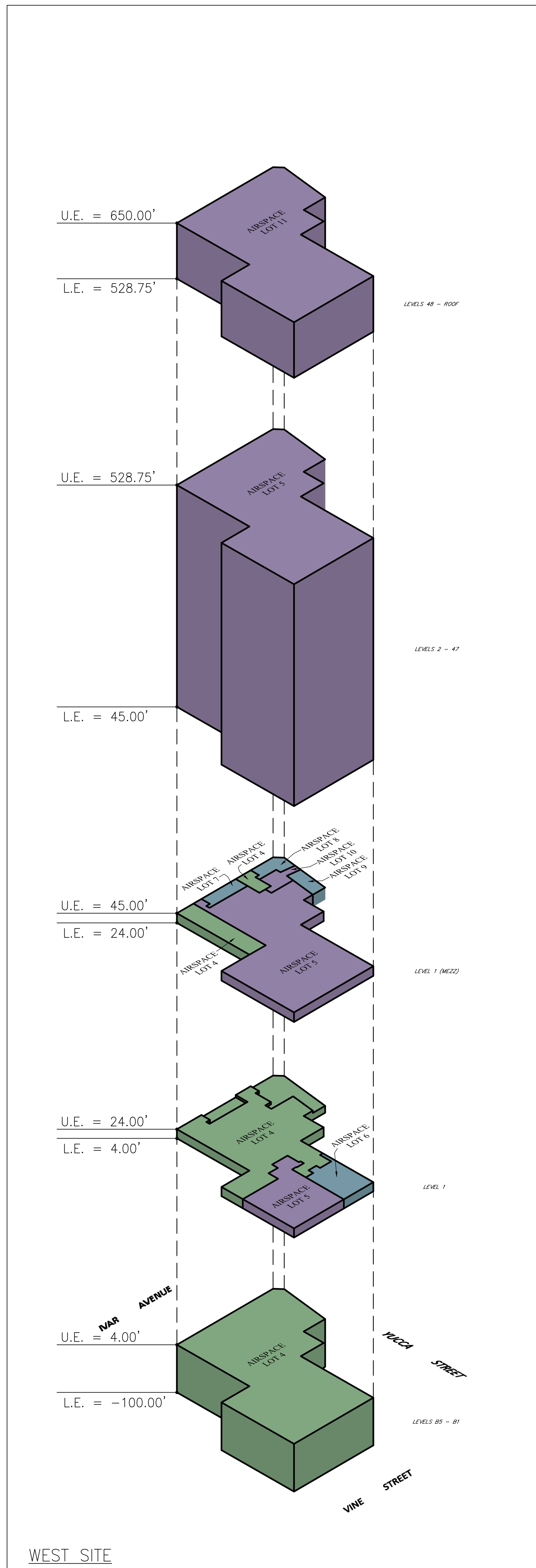


VESTING TENTATIVE TRACT MAP NO. 82152

AIRSPACE LOT ISOMETRIC



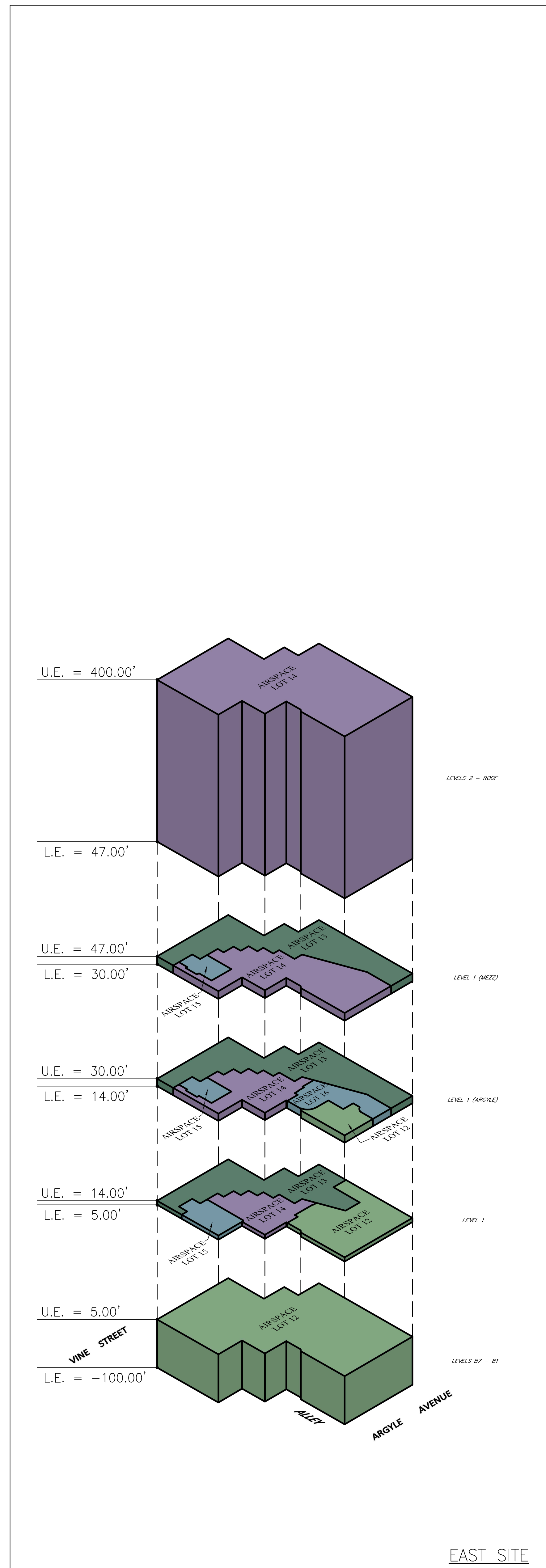
700 South Flower Street
Suite 2100
Los Angeles, CA 90017
O: 213.418.0201
F: 213.266.5294
www.kpff.com



WEST SITE



FLOOR VIEWS



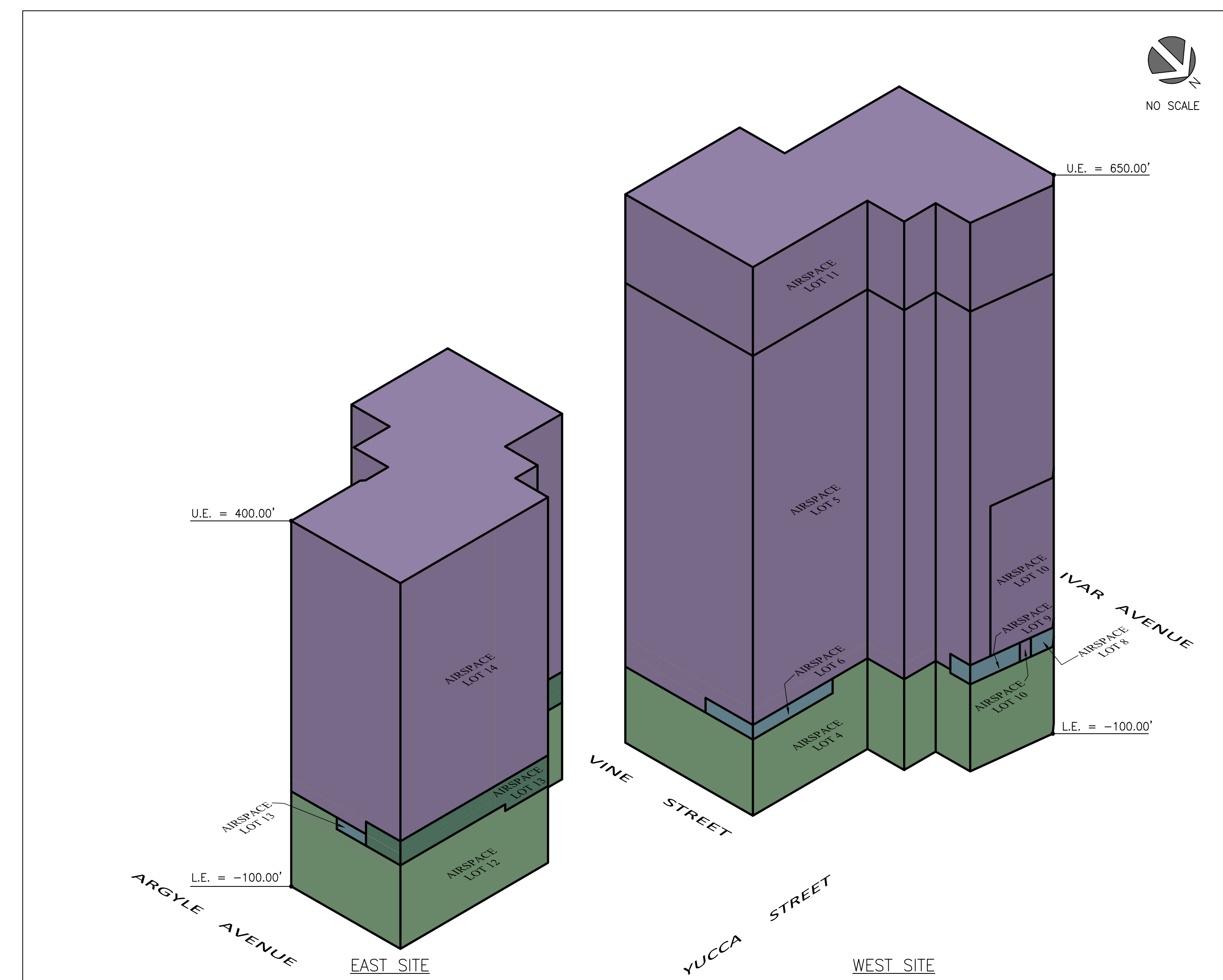
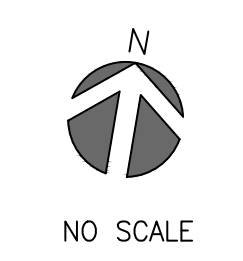
EAST SITE



WEST SITE

EAST SITE

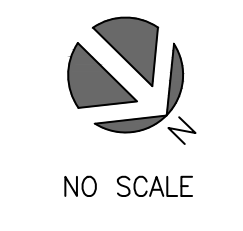
OVERALL VIEW
LOOKING NORTH



EAST SITE

WEST SITE

OVERALL VIEW
LOOKING SOUTHWEST



ABBREVIATION LEGEND
L.E. = LOWER ELEVATION
U.E. = UPPER ELEVATION

REVISIONS	
DATE	ISSUED FOR

DATE: 07/23/2020
PROJECT NUMBER: 1700060
DRAWN BY: DB
CHECKED BY: CJ
SCALE: AS SPECIFIED

PROJECT ADDRESS:
HOLLYWOOD CENTER
(ALT 08)

SHEET NUMBER